

THE SHED SHOP



SWADLINCOTE

**SHEDS
STORAGE ROOMS
WORKSHOPS**

07918650247 01283 225372

www.theshedshop.com Email theshedshop@sky.com



Garden Sheds, Summerhouses, Playhouses, Kennels, Runs,
Aviaries, Field Shelters, Stables And More
Standard designs or to your requirements



Pent Sheds



Apex Sheds



Hipex Sheds

You Can Choose

- Door position
- Single 30 inch door,
Single 3ft door,
Double Doors
- Windows or Windowless,
Quantity of windows,
Position of windows



***Reversed
Pent Sheds***



Tool cupboard Sheds



Slim Sheds



Corner Sheds

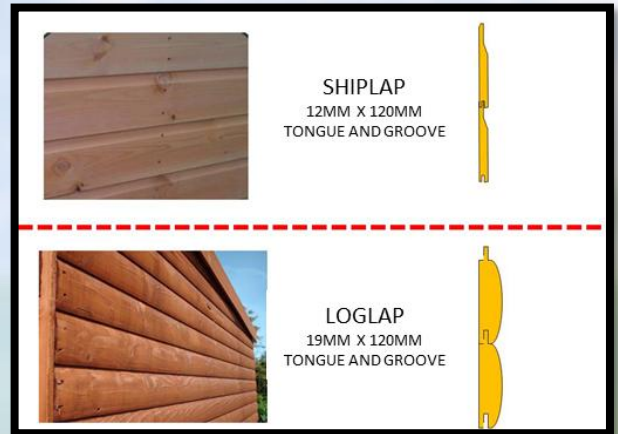
Opening Hours: Sat 10.30-3.00 / Mon - Wed 8.30-3.00 / Thurs - Fri varies due to deliveries Please ring first.
Sundays and Bank Holidays Closed

The Shed Shop Unit 14, George Holmes, Business Centre, Hearthcote Road, Swadlincote DE11 9DF

We specialise in "bespoke" units made to your individual requirements in our own workshop.
The base is down to **you**. It needs to be **solid** and **level**. If found to be unsuitable we will only drop off your shed

Price doesn't include windows but does include floor.

Colour indicates erection pricing erection pricing SIZE	DELUXE SHIPLAP	SUPER DELUXE SHIPLAP	DELUXE LOGLAP	SUPER DELUXE LOGLAP
4x4 5x3	£500.00	£535.00	£660.00	£695.00
6x4 5x5	£595.00	£640.00	£755.00	£790.00
8x4 7x5 6x6	£795.00	£830.00	£970.00	£1,005.00
8x6 9x5 10x4	£855.00	£895.00	£1,090.00	£1,130.00
8x8 9x7 10x6 11x5 12x4	£1,000.00	£1,040.00	£1,290.00	£1,330.00
9x9 10x8 11x7 12x6 13x5 14x4	£1,240.00	£1,290.00	£1,530.00	£1,580.00
10x10 11x9 12x8 13x7 14x6 15x5 16x4	£1,375.00	£1,425.00	£1,665.00	£1,715.00
12x10 13x9 14x8 15x7 16x6	£1,655.00	£1,705.00	£2,060.00	£2,110.00



Both **Deluxe** and **Super Deluxe** sheds come with a floor and roof that is made using tongue & groove matchboard. This is 12mm thick which comes with a planed finish. Boards join together creating a stronger floor and roof. The walls are either made using shiplap that is 12mm thick (shiplap is tongue and groove) or Log lap which is 19mm thick to its widest part.(again tongue and grooved together) The framing we use is 45mmx35mm with rounded edges.

Loglap will create a stronger shed as it is thicker timber!

What is the Difference?

Deluxe Apex sheds are 67" high to the eaves and 81" high to the middle.

Deluxe Pent sheds are 67" high on the low edge and 76" high on the high edge.

Super Deluxe apex sheds are 76" high to the eaves and 90" high to the middle.

Super Deluxe Pent sheds are 76" high on the low edge and 84" high on the high edge.

Reversed pents and Hipex sheds require super deluxe height otherwise the doors will be made shorter!

All measurements are approximate internal measurements and exclude the floor and roof.

SIZE	TOOL CUBOARD/ TOOL STORE
3X3	£390.00
4X3	£437.50
5X3	£485.00
6X3	£532.50

ERECTION SERVICE AVAILABLE
£35.00 TOOL CUPBOARDS ONLY
£65.00 upto and including 10x6
11x6 –12x7 and combinations of the same area £75.00
12x8–16x7 and combinations of the same area £95.00
16x8 and Larger £145.00

PLEASE NOTE SIZES SHOWN ARE STANDARD SIZES. IF YOU REQUIRE DIFFERENT PLEASE ASK FOR A QUOTE

EXTRAS IF REQUIRED



Windows (Labour Charge)
£25.00 for as many as you want

Double Doors
£25.00



THE SHED SHOP



SWADLINCOTE

LARGE SHEDS STORAGE ROOMS WORKSHOPS

07918650247 01283 225372

www.theshedshop.com Email theshedshop@sky.com

Garden Sheds, Summerhouses, Playhouses, Kennels, Runs,
Aviaries, Field Shelters, Stables And More
Standard designs or to your requirements



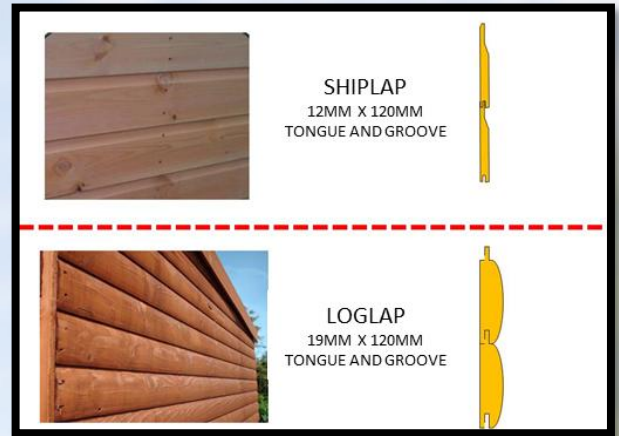
Opening Hours: Sat 10.30-3.00 / Mon - Wed 8.30-3.00 / Thurs - Fri varies due to deliveries Please ring first.
Sundays and Bank Holidays Closed

The Shed Shop Unit 14, George Holmes, Business Centre,Heathcote Road, Swadlincote DE11 9DF

We specialise in "bespoke" units made to your individual requirements in our own workshop.
The base is down to **you** . It needs to be **solid** and **level**. If found to be unsuitable we will only drop off your shed

Price doesn't include, but does include floor.

Colour indicates erection pricing SIZE	DELUXE SHIPLAP	SUPER DELUXE SHIPLAP	DELUXE LOGLAP	SUPER DELUXE LOGLAP
12x12 14x10 16x8 18x6	£1,850.00	£1,900.00	£2,255.00	£2,305.00
12x14 15x11 16x10 17x9 18x8 19x7	£2,095.00	£2,145.00	£2,500.00	£2,550.00
12x16 18x10	£2,420.00	£2,470.00	£2,890.00	£2,940.00
12x18	£2,675.00	£2,735.00	£3,130.00	£3,230.00
12x19	£2,785.00	£2,845.00	£3,310.00	£3,350.00



Both Deluxe and Super Deluxe sheds come with a floor and roof that is made using tongue & groove matchboard. This is 12mm thick which comes with a planed finish. Boards join together creating a stronger floor and roof. The walls are either made using shiplap that is 12mm thick (shiplap is tongue and groove) or Log lap which is 19mm thick to its widest part.(again tongue and grooved together) The framing we use is 45mmx35mm with rounded edges.

Loglap will create a stronger shed as it is thicker timber!

Please note
Pent sheds cannot have gables wider than 10ft as the fall won't be enough

What is the Difference?

Deluxe Apex sheds are 67" high to the eaves and 81" high to the middle.

Deluxe Pent sheds are 67" high on the low edge and 76" high on the high edge.

Super Deluxe apex sheds are 76"high to the eaves and 90" high to the middle.

Super Deluxe Pent sheds are 76" high on the low edge and 84" high on the high edge.

Reversed pents and Hipex sheds require super deluxe height otherwise the doors will be made shorter!

All measurements are approximate internal measurements and exclude the floor and roof.

ERECTION SERVICE AVAILABLE

16 X 8 AND LARGER
£145.00

PLEASE NOTE SIZES SHOWN ARE STANDARD SIZES.IF YOU REQUIRE DIFFERENT PLEASE ASK FOR A QUOTE

EXTRAS IF REQUIRED



Windows (Labour Charge)
£25.00 for as many as you want

Double Doors
£25.00



THE SHED SHOP



SWADLINCOTE

SUMMER HOUSES HOME OFFICES GARDEN ROOMS

07918650247 01283 225372

www.theshedshop.com Email theshedshop@sky.com

Garden Sheds, Summerhouses, Playhouses, Kennels, Runs,
Aviaries, Field Shelters, Stables And More
Standard designs or to your requirements



WORDSWORTH



GEORGIAN WORDSWORTH



CHARNWOOD CABIN



THE GARDEN HIDEOUT



VALENCIA



SUN CHALET (8ft)



SUN CHALET (10ft and bigger)



SUN CHALET DELUXE



THE SUN ROOM



GARDEN PENT HOUSE



HILTON



HILTON DELUXE



GARDEN SUN ROOM



CORNER SUMMER HOUSE

CUSTOM MADE SIZES
AVAILABLE ON ALL UNITS
OR EVEN MIX AND MATCH
YOUR FAVOURITE BITS TO
CREATE YOUR OWN STYLE.
PLEASE ASK FOR A QUOTE



Opening Hours: Sat 10.30-3.00 / Mon - Wed 8.30-3.00 / Thurs - Fri varies due to deliveries Please ring first.
Sundays and Bank Holidays Closed

The Shed Shop Unit 14, George Holmes, Business Centre, Heathcote Road, Swadlincote DE11 9DF

We specialise in "bespoke" units made to your individual requirements in our own workshop.
The base is down to **you**. It needs to be **solid** and **level**. If found to be unsuitable we will only drop off your shed

PRICES PRINTED MAY 2026
ALL SIZES ARE APPROXIMATE

iplap (Colour indicates erection pricing)	8x6	8x8	10x6	10x8	12x6	12x8
Wordworth	£975.00	£1,120.00	£1,145.00	£1,385.00	£1,400.00	£1,535.00
Georgian Wordworth	£1,050.00	£1,195.00	£1,250.00	£1,490.00	£1,505.00	£1,640.00
Charnwood Cabin	£1,015.00	£1,160.00	£1,185.00	£1,425.00	£1,440.00	£1,575.00
Garden Hideout	£985.00	£1,130.00	£1,155.00	£1,395.00	£1,410.00	£1,545.00
Valencia	£1,257.00	£1,362.00	£1,382.00	£1,672.00	£1,692.00	£1,827.00
Sun Chalet 8ft Front	£1,290.00	£1,435.00	N/A	£1,685.00	N/A	£1,820.00
Sun Chalet 10ft Front Or Bigger	N/A	N/A	£1,490.00	£1,740.00	£1,755.00	£1,890.00
The Sun Room 8ft Front	£1,320.00	£1,465.00	N/A	£1,715.00	N/A	£1,850.00
The Sun Room 10ft Front Or Bigger	N/A	N/A	£1,510.00	£1,760.00	£1,775.00	£1,910.00
Hilton 8ft Front	£1,290.00	£1,435.00	N/A	£1,685.00	N/A	N/A
Hilton 10ft Front Or Bigger	N/A	N/A	£1,490.00	£1,740.00	£1,755.00	£1,890.00
Sun Chalet Deluxe 8ft Front	£1,345.00	£1,585.00	N/A	£1,740.00	N/A	£1,875.00
Sun Chalet Deluxe 10ft Front Or Bigger	N/A	N/A	£1,540.00	£1,790.00	£1,810.00	£1,945.00
Garden Sun Room	£1,435.00	£1,580.00	£1,645.00	£1,895.00	£1,910.00	£2,045.00
Garden Pent House	£1,405.00	£1,550.00	£1,585.00	£1,835.00	£1,850.00	£1,985.00
Hilton Deluxe	£1,920.00	£2,065.00	£2,085.00	£2,335.00	£2,355.00	£2,490.00
Corner Summer House	N/A	£1,450.00	N/A	N/A	N/A	N/A

Erection Service
Upto 10x6 £65.00
Bigger than 10x6 and upto 12x7 £75.00
Bigger than 12x7 and upto 16x7 £95.00
16x8 And Larger £145.00
YOUR BASE MUST BE FLAT & LEVEL

oglap (Colour indicates erection pricing)	8x6	8x8	10x6	10x8	12x6	12x8
Wordworth	£1,210.00	£1,410.00	£1,435.00	£1,675.00	£1,690.00	£1,825.00
Georgian Wordworth	£1,285.00	£1,485.00	£1,540.00	£1,780.00	£1,795.00	£1,930.00
Charnwood Cabin	£1,250.00	£1,450.00	£1,475.00	£1,715.00	£1,730.00	£1,865.00
Garden Hideout	£1,220.00	£1,420.00	£1,445.00	£1,685.00	£1,700.00	£1,835.00
Valencia	£1,492.00	£1,692.00	£1,712.00	£1,962.00	£1,982.00	£2,117.00
Sun Chalet 8ft Front	£1,525.00	£1,725.00	N/A	£1,975.00	N/A	£2,110.00
Sun Chalet 10ft Front Or Bigger	N/A	N/A	£1,780.00	£2,030.00	£2,045.00	£2,180.00
The Sun Room 8ft Front	£1,555.00	£1,755.00	N/A	£2,005.00	N/A	£2,140.00
The Sun Room 10ft Front Or Bigger	N/A	N/A	£1,800.00	£2,030.00	£2,065.00	£2,200.00
Hilton 8ft Front	£1,525.00	£1,725.00	N/A	£1,975.00	N/A	N/A
Hilton 10ft Front Or Bigger	N/A	N/A	£1,780.00	£2,030.00	£2,045.00	£2,180.00
Sun Chalet Deluxe 8ft Front	£1,580.00	£1,780.00	N/A	£2,030.00	N/A	£2,165.00
Sun Chalet Deluxe 10ft Front Or Bigger	N/A	N/A	£1,830.00	£2,080.00	£2,100.00	£2,235.00
Garden Sun Room	£1,670.00	£1,870.00	£1,935.00	£2,185.00	£2,200.00	£2,335.00
Garden Pent House	£1,640.00	£1,840.00	£1,875.00	£2,125.00	£2,140.00	£2,275.00
Hilton Deluxe	£2,155.00	£2,355.00	£2,375.00	£2,625.00	£2,645.00	£2,780.00
Corner Summer House	N/A	£1,740.00	N/A	N/A	N/A	N/A

Erection Service
Upto 10x6 £65.00
Bigger than 10x6 and upto 12x7 £75.00
Bigger than 12x7 and upto 16x7 £95.00
16x8 And Larger £145.00
YOUR BASE MUST BE FLAT & LEVEL

PLEASE NOTE SIZES SHOWN ARE STANDARD SIZES. IF YOU REQUIRE DIFFERENT PLEASE ASK FOR A QUOTE .ALL SIZES ARE APPROXIMATE

DESCRIPTION

WORDSWORTH	TWO WINDOWS TO THE FRONT EITHER SIDE OF THE DOOR, TWO WINDOWS IN ONE SIDE (CAN BE ERECTED EITHER ON THE LEFT OR RIGHT)AND 1FT OVERHANG TO ROOF
GEORGIAN WORDSWORTH	SIX PANE EFFECT GEORGIAN WINDOWS TO THE FRONT EITHER SIDE OF THE DOOR AND 1FT OVERHANG TO THE ROOF
CHARNWOOD CABIN	FOUR WINDOWS TO THE FRONT GIVING A 3FT X3FT WINDOW, 1FT OVERHANG TO THE ROOF WITH ANGLED SIDE PANELS
THE GARDEN HIDE OUT	TWO WINDOWS EACH SIDE OF THE DOOR, TWO WINDOWS IN EACH SIDE TOWARDS THE FRONT,STABLE DOOR AND 1 FT OVERHANG ON THE ROOF.
VALENCIA	30 INCH VERANDA (NOT INCLUDED IN THE UNIT SIZE .eg 8'x8' unit has a base of 8' x 10'6",FULLY GLAZED DOORS,TWO WINDOWS EITHER SIDE OF THE DOOR AND TWO WINDOWS IN EACH SIDE TOWARDS THE FRONT.
SUN CHALET	SIX PANE EFFECT GEORGIAN WINDOWS EITHER SIDE OF THE DOORS, TEN PANE EFFECT DOUBLE DOORS WITH KEY LOCK AND 1 FT OVERHANG TO THE ROOF
THE SUN ROOM	TEN OR FIFTEEN PANE EFFECT GEORGIAN WINDOWS EITHER SIDE OF THE DOORS, TEN PANE EFFECT DOUBLE DOORS WITH KEY LOCK AND 2 FT OVERHANG TO THE ROOF
HILTON	NINE PANE EFFECT GEORGIAN WINDOWS EITHER SIDE OF THE DOORS, TEN PANE EFFECT DOUBLE DOORS WITH KEY LOCK AND 30 INCH OVERHANG TO THE ROOF
SUN CHALET DELUXE	30 INCH VERANDA (NOT INCLUDED IN THE UNIT SIZE .eg 8'x8' unit has a base of 8' x 10'6",SIX PANE EFFECT GEORGIAN WINDOWS EITHER SIDE OF THE DOORS, TEN PANE EFFECT DOUBLE DOORS WITH KEY LOCK .
GARDEN PENT HOUSE	TWO 2/3 HIGH PANE WINDOWS EITHER SIDE OF THE DOORS, SINGLE PANE DOUBLE DOORS WITH KEY LOCK AND 1 FT OVERHANG TO THE ROOF
GARDEN SUN ROOM	TWO FULL PANE WINDOWS EITHER SIDE OF THE DOORS, SINGLE PANE DOUBLE DOORS WITH KEY LOCK AND 1 FT OVERHANG TO THE ROOF
HILTON DELUXE	NINE PANE EFFECT GEORGIAN WINDOWS EITHER SIDE OF THE DOORS, TEN PANE EFFECT DOUBLE DOORS WITH KEY LOCK AND 3FT OVERHANG TO THE ROOF WITH DECKING AND HANDRAILS TO THE VERANDA 3FT WIDE

THE SHED SHOP



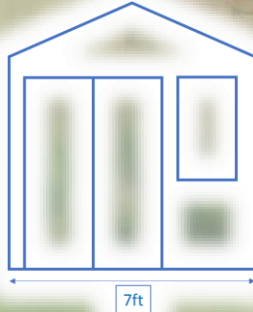
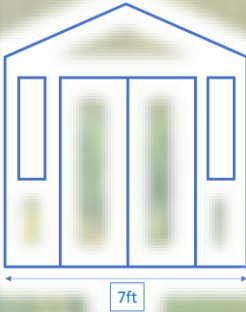
SWADLINCOTE

**SMALL
SUMMER HOUSES
GARDEN ROOMS**

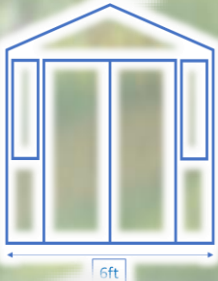
07918650247 01283 225372

www.theshedshop.com Email theshedshop@sky.com

Garden Sheds, Summerhouses, Playhouses, Kennels, Runs,
Aviaries, Field Shelters, Stables And More
Standard designs or to your requirements



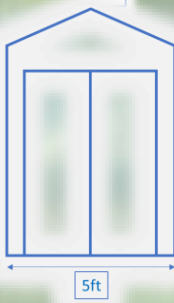
7 FT FRONT HAS THE ROOM FOR EITHER
DOORS + 2 WINDOWS (H/O)
OR OFFSET DOORS + 1 WINDOW (L/P)



6 FT FRONT HAS THE ROOM FOR
DOORS + 2 WINDOWS (H/O)

GEORGIAN RANGE

FULL PANE STYLE



5 FT FRONT
HAS THE ROOM
FOR ONLY
DOORS

BASIC DOORS

Opening Hours: Sat 10.30-3.00 / Mon - Wed 8.30-3.00 / Thurs - Fri varies due to deliveries Please ring first.
Sundays and Bank Holidays Closed

The Shed Shop Unit 14, George Holmes, Business Centre,Heathcote Road, Swadlincote DE11 9DF

We specialise in "bespoke" units made to your individual requirements in our own workshop.
The base is down to **you**. It needs to be **solid** and **level**. If found to be unsuitable we will only drop off your shed

PRICES PRINTED May 2026
ALL SIZES ARE APPROXIMATE

ALL PRICES ARE
MODIFIED VERSIONS
OF THE BIGGER UNITS
(SEE SPEC)

EXTRAS
WINDOWS CAN
BE ADDED IN THE SIDES &
& DOOR WINDOW TYPES CAN BE
SWAPPED FOR
YOUR PREFERENCE!
PLEASE ASK FOR QUOTES

PLEASE NOTE
IMAGES SHOWN
ARE THE BIGGER UNITS!



WORDSWORTH GEORGIAN WORDSWORTH CHARNWOOD CABIN THE GARDEN HIDEOUT



VALENCIA SUN CHALET SUN CHALET DELUXE THE SUN ROOM



GARDEN PENT HOUSE HILTON GARDEN SUN ROOM

	5x5	5x6	6x6	6x7	7x7
Wordsworth	£715.00	£815.00	£915.00	£945.00	£975.00
Georgian Wordsworth	£740.00	£840.00	£990.00	£1,020.00	£1,050.00
Charnwood Cabin	£755.00	£855.00	£955.00	£985.00	£1,015.00
Garden Hideout	£725.00	£825.00	£925.00	£955.00	£985.00
Valencia	£897.00	£1,066.50	£1,119.00	£1,214.00	£1,309.00
Sun Chalet	£830.00	£982.50	£1,035.00	£1,130.00	£1,225.00
The Sun Room	£830.00	£947.50	£1,000.00	£1,095.00	£1,190.00
Hilton 8ft Front	£830.00	£982.50	£1,035.00	£1,130.00	£1,225.00
Sun Chalet Deluxe	£885.00	£1,002.50	£1,055.00	£1,150.00	£1,245.00
Garden Sun Room	£895.00	£1,037.50	£1,090.00	£1,185.00	£1,280.00
Garden Pent House	£895.00	£1,097.50	£1,150.00	£1,245.00	£1,340.00

Erection Service

£65.00

YOUR BASE
MUST BE
FLAT
&
LEVEL

Loglap	5x5	5x6	6x6	6x7	7x7
Wordsworth	£875.00	£982.50	£1,090.00	£1,150.00	£1,210.00
Georgian Wordsworth	£900.00	£1,007.50	£1,165.00	£1,225.00	£1,285.00
Charnwood Cabin	£915.00	£1,022.50	£1,130.00	£1,190.00	£1,250.00
Garden Hideout	£885.00	£992.50	£1,100.00	£1,160.00	£1,220.00
Valencia	£1,057.00	£1,221.50	£1,269.00	£1,376.50	£1,484.00
Sun Chalet	£990.00	£1,137.50	£1,185.00	£1,292.50	£1,400.00
The Sun Room	£990.00	£1,102.50	£1,150.00	£1,257.50	£1,365.00
Hilton 8ft Front	£990.00	£1,137.50	£1,185.00	£1,292.50	£1,400.00
Sun Chalet Deluxe	£1,045.00	£1,157.50	£1,205.00	£1,312.50	£1,420.00
Garden Sun Room	£1,055.00	£1,192.50	£1,240.00	£1,347.50	£1,455.00
Garden Pent House	£1,055.00	£1,252.50	£1,300.00	£1,407.50	£1,515.00

Erection Service

£65.00

YOUR BASE
MUST BE
FLAT
&
LEVEL

WORDSWORTH	5FT. ONE OFF SET DOOR & ONE WINDOW TO THE FRONT. 6FT & 7FT .TWO SLIM WINDOWS TO THE FRONT EITHER SIDE OF THE DOOR, ALL SIZES WITH EITHER 0/1/2 WINDOWS IN ONE SIDE (CAN BE ERECTED EITHER ON THE LEFT OR RIGHT)AND 1FT OVERHANG TO ROOF
GEORGIAN WORDSWORTH	5FT. ONE OFF SET DOOR & ONE (H) WINDOW. 6FT.ONE OFF SET DOOR & ONE(I) WINDOW. 7FT.ONE CENTRE DOOR & TWO (H) WINDOWS EITHER SIDE. ALL HAVE A 1FT OVERHANG TO THE ROOF
CHARNWOOD CABIN	TWO WINDOWS TO THE FRONT (ONE ABOVE THE OTHER), 1FT OVERHANG TO THE ROOF WITH ANGLED SIDE PANELS
THE GARDEN HIDE OUT	5FT. ONE OFF SET DOOR & TWO WINDOWS ONE SIDE OF THE DOOR. 6FT & 7FT TWO SLIM WINDOWS EACH SIDE OF THE DOOR, TWO WINDOWS IN EACH SIDE TOWARDS THE FRONT,STABLE DOOR AND 1 FT OVERHANG ON THE ROOF.
VALENCIA	5FT DOORS ONLY IN THE FRONT. 6FT & 7FT SLIM WINDOWS EITHER SIDE THE DOOR. ALL INCLUDE A 30 INCH VERANDA (NOT INCLUDED IN THE UNIT SIZE .eg 5'x5' unit has a base of 5' x 7'6", FULLY GLAZED DOORS, TWO WINDOWS IN EACH SIDE TOWARDS THE FRONT.
SUN CHALET	5FT DOORS ONLY IN THE FRONT. 6FT & 7FT TWO (I) WINDOWS EITHER SIDE THE DOOR., TEN PANE EFFECT DOUBLE DOORS WITH KEY LOCK AND 1 FT OVERHANG TO THE ROOF
THE SUN ROOM	5FT DOORS ONLY IN THE FRONT. 6FT & 7FT ONE PAIR OF OFF SET DOORS & ONE (M) TEN PANE EFFECT GEORGIAN WINDOW, TEN PANE EFFECT DOUBLE DOORS WITH KEY LOCK AND 2 FT OVERHANG TO THE ROOF
HILTON	5FT DOORS ONLY IN THE FRONT. 6FT & 7FT TWO (I) WINDOWS EITHER SIDE THE DOOR. TEN PANE EFFECT DOUBLE DOORS WITH KEY LOCK AND 30 INCH OVERHANG TO THE ROOF
SUN CHALET DELUXE	5FT DOORS ONLY IN THE FRONT. 6FT & 7FT TWO (I) WINDOWS EITHER SIDE THE DOOR. TEN PANE EFFECT DOUBLE DOORS WITH KEY LOCK AND A 30 INCH VERANDA (NOT INCLUDED IN THE UNIT SIZE .eg 5'x5' unit has a base of 5' x 7'6",
GARDEN PENT HOUSE	5FT DOORS ONLY IN THE FRONT. . 6FT & 7FT TWO (O) WINDOWS EITHER SIDE THE DOOR,SINGLE PANE DOUBLE DOORS WITH KEY LOCK AND 1 FT OVERHANG TO THE ROOF
GARDEN SUN ROOM	5FT DOORS ONLY IN THE FRONT. 6FT & 7FT ONE PAIR OF OFF SET DOORS & ONE (T) FULL PANE WINDOW TO THE SIDE OF THE DOORS, SINGLE PANE DOUBLE DOORS WITH KEY LOCK AND 1 FT OVERHANG TO THE ROOF
	EXTRA SIDE WINDOWS CAN BE ADDED .PLEASE AS FOR A QUOTE IF REQUIRED!

THE SHED SHOP

BARN STYLE SHEDS

07918650247 01283 225372

www.theshedshop.com Email theshedshop@sky.com

Garden Sheds, Summerhouses, Playhouses, Kennels, Runs,
Aviaries, Field Shelters, Stables And More
Standard designs or to your requirements



SWADLINCOTE

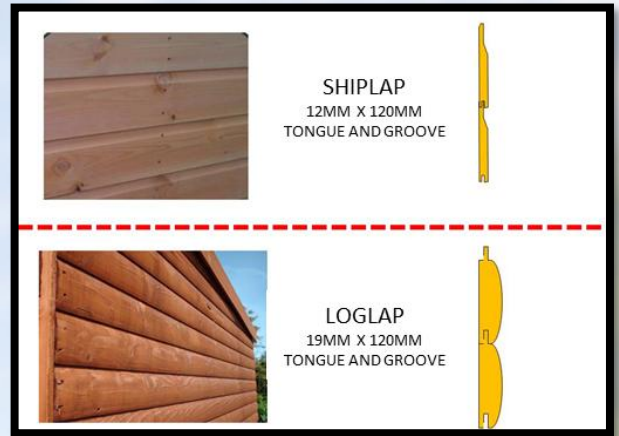


Opening Hours: Sat 10.30-3.00 / Mon - Wed 8.30-3.00 / Thurs - Fri varies due to deliveries Please ring first.
Sundays and Bank Holidays Closed

The Shed Shop Unit 14, George Holmes, Business Centre, Hearthcote Road, Swadlincote DE11 9DF

We specialise in "bespoke" units made to your individual requirements in our own workshop.
The base is down to **you** . It needs to be **solid** and **level**. If found to be unsuitable we will only drop off your shed

PRICES PRINTED MAY 2026
ALL SIZES ARE APPROXIMATE



Barn sheds come with a floor and roof that is made using tongue & groove matchboard. This is 12mm thick and comes with a planed finish. Boards join together creating a stronger floor and roof.

The walls are either made using shiplap that is 12mm thick (shiplap is tongue and groove) or Log lap which is 19mm thick to its widest part.(again tongue and grooved together) The framing we use is 45mmx35mm with rounded edges.

Log lap will create a stronger shed as it is thicker timber!

	SHIPLAP	LOGLAP
8X6	£985.00	£1,220.00
8X8	£1,130.00	£1,420.00
10X6	£1,130.00	£1,420.00
10X8	£1,380.00	£1,670.00
12X6	£1,380.00	£1,670.00
12X8	£1,515.00	£1,805.00

****Price Includes Double doors and windows****

Barn sheds are 67” high to the eaves and approximately 90” high to the middle.

All measurements are internal measurements and exclude the floor and roof.

ERECTION SERVICE AVAILABLE
£35.00 TOOL CUPBOARDS ONLY
£65.00 upto and including 10x6
11x6 –12x7 and combinations of the same area £75.00
12x8–16x8 and combinations of the same area £95.00
Larger than 16x8 £135.00

PLEASE NOTE SIZES SHOWN ARE STANDARD SIZES. IF YOU REQUIRE DIFFERENT PLEASE ASK FOR A QUOTE

THE SHED SHOP

POTTING SHEDS



SWADLINCOTE

07918650247

01283 225372

www.theshedshop.com Email theshedshop@sky.com

Garden Sheds, Summerhouses, Playhouses, Kennels, Runs,
Aviaries, Field Shelters, Stables And More
Standard designs or to your requirements



*Includes
Potting Shelf*



Straight Front

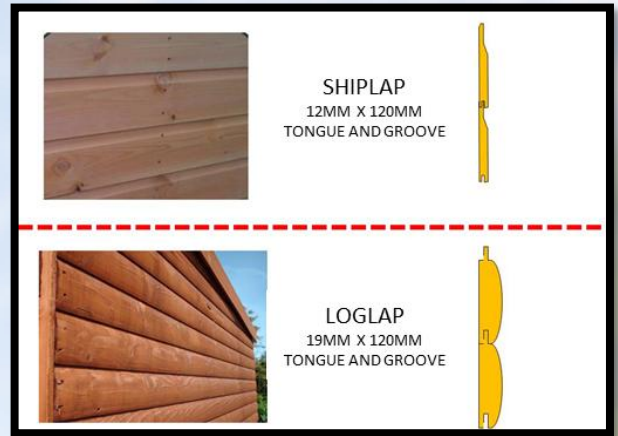


Angled Front

Opening Hours: Sat 10.30-3.00 / Mon - Wed 8.30-3.00 / Thurs - Fri varies due to deliveries Please ring first.
Sundays and Bank Holidays Closed

The Shed Shop Unit 14, George Holmes, Business Centre, Hearthcote Road, Swadlincote DE11 9DF

We specialise in "bespoke" units made to your individual requirements in our own workshop.
The base is down to *you* . It needs to be *solid* and *level*. If found to be unsuitable we will only drop off your shed



Potting sheds come with a floor and roof that is made using tongue & groove matchboard. This is 12mm thick which comes with a planed finish. Boards join together creating a stronger floor and roof.

The walls are either made using shiplap that is 12mm thick (shiplap is tongue and groove) or Log lap which is 19mm thick to its widest part. (again tongue and grooved together) The framing we use is 45mmx35mm with rounded edges.

Potting sheds are 67" high on the low edge and 76" high on the high edge.

All measurements are internal measurements and exclude the floor and roof.

	STRAIGHT FRONT		ANGLED FRONT	
SIZE	SHIPLAP	LOGLAP	SHIPLAP	LOGLAP
7x5	£860.00	£1,035.00	£890.00	£1,065.00
8x6	£920.00	£1,155.00	£950.00	£1,185.00
10x6	£1,065.00	£1,355.00	£1,095.00	£1,385.00
8x8	£1,065.00	£1,355.00	£1,095.00	£1,385.00
10x8	£1,305.00	£1,595.00	£1,335.00	£1,625.00

ERECTION SERVICE AVAILABLE
 £65.00 upto and including 10x6
 11x6 – 12x7 and combinations of the
 same area £75.00
 Stable door add £5.00

THE SHED SHOP

PLAY HOUSES & TEENAGE HANG OUT ROOMS



SWADLINCOTE

07918650247 01283 225372

www.theshedshop.com Email theshedshop@sky.com

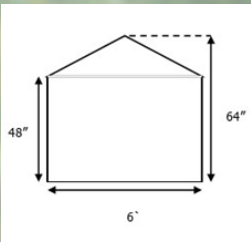
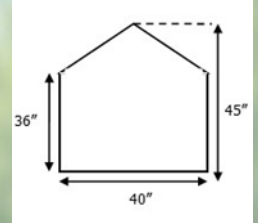
Garden Sheds, Summerhouses, Playhouses, Kennels, Runs, Aviaries, Field Shelters, Stables And More
Standard designs or to your requirements



SHIPLAP £330.00

LOGLAP £390.00

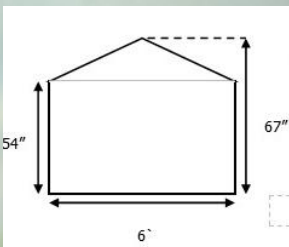
The budget playhouse is as the name suggests. Ideal for the very young and toddler age group. This playhouse sits directly on the floor with no timber floor and open windows (no perspex) so you can see and hear your child at play at all times.



The Little Den comes as a standard size 6x4. If you require a custom size please ask and we will be happy to quote. When choosing your size please remember the internal useable size is approximately 5 inches smaller than the size chosen! Also When preparing your base the floor panel will always be 2 inches smaller than your chosen size. The little den playhouse comprises of a central door with a perspex window either side it on the front. The roof has a 1ft overhang veranda.



SHIPLAP 6 X 4 £630.00



The Poppy Play House comes as a standard size 6x6 & 6x4 with a 2ft veranda. If you require a custom size please ask and we will be happy to quote. When choosing your size please remember the internal useable size is approximately 5 inches smaller than the size chosen! Also When preparing your base the floor panel will always be 2 inches smaller than your chosen size. The Poppy playhouse comprises of a stable door and perspex window to the side it on the front and 1 perspex window in either side. To the front is a 2ft overhang veranda. (unit size excludes the veranda)

SHIPLAP 6 X 4 £700.00

SHIPLAP 6 X 6 £910.00



Opening Hours: Sat 10.30-3.00 / Mon - Wed 8.30-3.00 / Thurs - Fri varies due to deliveries Please ring first.
Sundays and Bank Holidays Closed

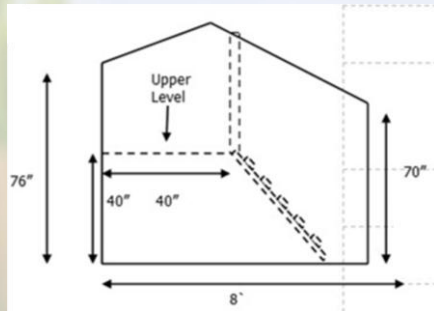
The Shed Shop Unit 14, George Holmes, Business Centre, Heathcote Road, Swadlincote DE11 9DF

We specialise in "bespoke" units made to your individual requirements in our own workshop.

The base is down to you. It needs to be solid and level. If found to be unsuitable we will only drop off your shed

The Hideaway House comes as a standard size 8x6 & 8x4 with a 2ft veranda. If you require a custom size please ask and we will be happy to quote. When choosing your size please remember the internal useable size is approximately 5 inches smaller than the size chosen! Also When preparing your base the floor panel will always be 2 inches smaller than your chosen size.

The Hideaway house comprises of a raised area with ladder up to it and to the front of the unit is a 2ft veranda made with match board tongue and groove on the floor and roof.(can be made without veranda).Please ask for more details on this



8x4 (+ 2ft Veranda)	£1,130.00
8x6 (+ 2ft veranda)	£1,195.00

Ideal for age 10+ children/teens who want there own space. And best of all when they get bored of it you have a summer house or storage shed ready made!

The garden hideout comprises of two windows either side of the door and two windows towards the front on both sides.The door is split in two to create a stable door and the roof gives a 1ft overhang veranda..

	Shiplap	Loglap
8x6	£1,045.00	£1,280.00
8x8	£1,190.00	£1,480.00



The Charnwood cabin comprises of four windows to the front giving a 3ft x 3ft.window and two window in one side (can be either side as long as stated on order) .Both sides are angled to meet the 1ft overhang on the roof. The door is a single ledged and brace tongue and groove match board construction 2ft 6 inch wide.

	Shiplap	Loglap
8x6	£1,075.00	£1,310.00
8x8	£1,220.00	£1,510.00

ERECTION SERVICE AVAILABLE
£65.00 upto and including 10x6

THE SHED SHOP



SWADLINCOTE

ANIMAL HOUSES



07918650247 01283 225372

www.theshedshop.com Email theshedshop@sky.com

Garden Sheds, Summerhouses, Playhouses, Kennels, Runs,
Aviaries, Field Shelters, Stables And More
Standard designs or to your requirements



Cat / Cattery Houses
SINGLE
 3ft W x 7ft D 78 Inch High
 £805.00
DOUBLE
 6ft W x 7ft D 78 Inch High
 £1515.00



Chicken Arc
 3ft W X 6ft D 3ft 6 inch H
 £500.00



Duck House
 3ft w x 3ft D x 3ft H £315
 4ft w x 3ft D x 3ft H £363

Chicken House
 Includes nesting box & perch
 5ft W x 4ft D 5ft H (Main Unit Size. Nest Box 1ft W) £580
 6ft W x 4ft D 5ft H (Main Unit Size. Nest Box 1ft W) £625

Opening Hours: Sat 10.30-3.00 / Mon - Wed 8.30-3.00 / Thurs - Fri varies due to deliveries Please ring first.
Sundays and Bank Holidays Closed

The Shed Shop Unit 14, George Holmes, Business Centre,Heathcote Road, Swadlincote DE11 9DF

We specialise in "bespoke" units made to your individual requirements in our own workshop.
The base is down to **you** . It needs to be **solid** and **level**. If found to be unsuitable we will only drop off your shed

PRICES PRINTED MAY 2026
ALL SIZES ARE APPROXIMATE

Basic Kennel and Removable Runs

Available as an apex or pent. Includes removable front for easy cleaning.



Pent (Kennel Only) 3W x 3D x 3H	£310	Pent (Kennel Only) 3W x 4D x 3H	£358
Apex (Kennel Only) 3W x 3D x 3H	£325	Apex (Kennel Only) 3W x 4D x 3H	£363

Attachable Run 6ft x 3ft x 3ft Dog Run £395

Pent Dog Kennel With Combined Run 4ft High

Floor in sleeping area only,

.Sizes



6ft W x 4ft D x 4ft H To The Front	£670.00
8ft W x 4ft D x 4ft H To The Front	£870.00
10ft W x 4ft D x 4ft H To The Front	£930.00
12ft W x 4ft D x 4ft H To The Front	£1,075.00
14ft W x 4ft D x 4ft H To The Front	£1,390.00



Dog Kennel With Combined Run Full High Apex or Pent

Floor in sleeping area only

Sizes



8ft W x 6ft D x Deluxe Shed Height	£1,080.00
10ft W x 6ft D x Deluxe Shed Height	£1,225.00
12ft W x 6ft D x Deluxe Shed Height	£1,465.00
14ft W x 6ft D x Deluxe Shed Height	£1,675.00



**Stables ,Field Shelters ,
Aviaries & Dog Runs
Made to Order**



*Please Note
Sizes Shown Are Only
Suggested Sizes .*

We Can Make Any To Suit Your Own Needs

ERECTION SERVICE AVAILABLE

£35.00 UP TO 4FT X 4FT

£65.00 upto and including 10x6

11x6 –12x7 and combinations of the same area £75.00

12x8–16x8 and combinations of the same area £95.00